

Appendix I. The average number of species in each habitat type.

Appendix II. Estimates from GLMMs.

Appendix III. Canopy densities of four vegetation strata in each habitat type.

Appendix IV. Percentages of species with different pollination modes in each of seven habitat types.

Appendix V. Percentages of species with different pollination modes in all grid cells for (A) all plants, (B) woody species, (C) herbs and (D) grasses.

Appendix VI. Percentages of species with different specialized pollination modes in each of seven habitat types for (A) all plants, (B) woody species, (C) herbs and (D) grasses.

Appendix VII. Percentages of species with different specialized pollination modes in all grid cells for (A) all plants, (B) woody species, (C) herbs and (D) grasses.

Appendix VIII. Responses of richness of all plants with different pollination modes to vegetation structure.

Appendix IX. Responses of richness of woody plants with different pollination modes to vegetation structure.

Appendix X. Responses of richness of grasses with different pollination modes to vegetation structure.

Appendix XI. Responses of richness of herbs with different pollination modes to vegetation structure.

Appendix XII. Responses of richness of all plants with different specialized pollination modes to vegetation structure.

Appendix XIII. Responses of richness of woody plants with different specialized pollination modes to vegetation structure.

Appendix XIV. Responses of richness of grasses with different specialized pollination modes to vegetation structure.

Appendix XV. Responses of richness of herbs with different specialized pollination modes to vegetation structure.

Appendix XVI. Responses of richness of plants with different pollination modes to each variable in the full mode.

Appendix XVII. Responses of richness of plants with different specialized pollination modes to each variable in the full mode.

Appendix I. The average number of species in each habitat type.

	Habitat types	Insect $\pm$ sd	Wind $\pm$ sd	Self $\pm$ sd
	Dune	7.6 $\pm$ 5.0	5.9 $\pm$ 3.1	5.5 $\pm$ 3.6
	Heather	3.0 $\pm$ 3.2	4.9 $\pm$ 2.5	2.2 $\pm$ 2.5
	Production_forest	4.5 $\pm$ 3.7	5.6 $\pm$ 2.7	2.9 $\pm$ 2.8
All	River_swamp	7.4 $\pm$ 5.4	4.8 $\pm$ 3.0	5.5 $\pm$ 4.2
	Semi_natural_forest	5.9 $\pm$ 4.5	5.8 $\pm$ 2.8	3.8 $\pm$ 3.3
	Semi_natural_grassland	7.1 $\pm$ 5.1	7.0 $\pm$ 3.7	5.5 $\pm$ 3.9
	Swamp_peat	4.1 $\pm$ 3.7	3.9 $\pm$ 2.5	3.6 $\pm$ 2.7
	Dune	2.0 $\pm$ 1.6	0.7 $\pm$ 0.7	0.6 $\pm$ 0.9
	Heather	1.9 $\pm$ 1.1	1.7 $\pm$ 1.1	0.8 $\pm$ 0.8
	Production_forest	2.8 $\pm$ 1.9	3.2 $\pm$ 1.7	1.3 $\pm$ 1.0
Woody	River_swamp	2.1 $\pm$ 1.5	0.6 $\pm$ 1.0	0.6 $\pm$ 0.8
	Semi_natural_forest	3.1 $\pm$ 2.2	2.8 $\pm$ 1.7	1.4 $\pm$ 1.2
	Semi_natural_grassland	1.6 $\pm$ 1.4	1.0 $\pm$ 1.1	0.5 $\pm$ 0.8
	Swamp_peat	1.4 $\pm$ 1.3	0.7 $\pm$ 0.7	0.6 $\pm$ 0.8
	Dune	6.7 $\pm$ 4.4	0.8 $\pm$ 0.9	5.3 $\pm$ 3.4
	Heather	2.6 $\pm$ 3.4	0.6 $\pm$ 0.7	2.5 $\pm$ 2.7
	Production_forest	3.0 $\pm$ 3.5	0.7 $\pm$ 0.9	2.7 $\pm$ 2.9
Herb	River_swamp	6.9 $\pm$ 4.9	1.6 $\pm$ 1.3	5.2 $\pm$ 3.9
	Semi_natural_forest	4.4 $\pm$ 4.1	0.8 $\pm$ 1.0	3.6 $\pm$ 3.3
	Semi_natural_grassland	7.0 $\pm$ 4.9	1.3 $\pm$ 1.2	5.5 $\pm$ 3.7

	Swamp_peat	$4.0 \pm 3.4$	$0.9 \pm 1.0$	$3.7 \pm 2.5$
<hr/>				
	Dune	$0.0 \pm 0.0$	$4.9 \pm 2.7$	$0.1 \pm 0.3$
	Heather	$0.0 \pm 0.0$	$3.2 \pm 1.9$	$0.1 \pm 0.4$
	Production_forest	$0.0 \pm 0.0$	$2.5 \pm 1.9$	$0.1 \pm 0.2$
Grass	River_swamp	$0.0 \pm 0.0$	$3.5 \pm 2.1$	$0.3 \pm 0.5$
	Semi_natural_forest	$0.0 \pm 0.0$	$3.2 \pm 2.2$	$0.1 \pm 0.3$
	Semi_natural_grassland	$0.0 \pm 0.0$	$5.5 \pm 3.1$	$0.2 \pm 0.4$
	Swamp_peat	$0.0 \pm 0.0$	$3.1 \pm 2.1$	$0.0 \pm 0.2$
<hr/>				

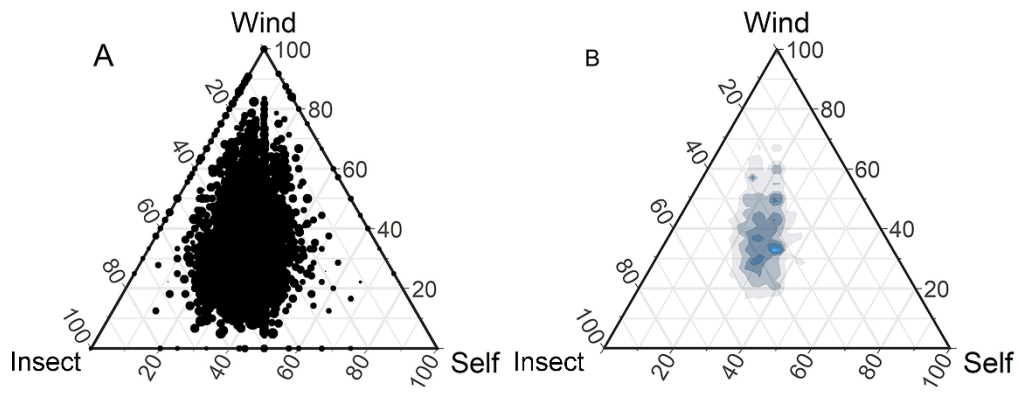
Appendix II. Estimates from GLMMs.

Specialized pollination	Growth_form	Pollination_mode	Intercept	05to2 m	10to20 m	2to5 m	5to10 m
-	All_species	Insect	1.67	0.06	-0.05	0.03	-0.05
-	All_species	Self	1.39	0.04	-0.09	0	-0.08
-	All_species	Wind	1.66	-0.02	0	-0.01	0.01
-	Grasses	Self	-2.4	-0.2	-0.16	-0.02	-0.07
-	Grasses	Wind	1.29	-0.01	-0.11	0	-0.05
-	Herbs	Insect	1.48	0.02	-0.17	0.05	-0.05
-	Herbs	Self	1.29	0.01	-0.16	0.01	-0.05
-	Herbs	Wind	-0.18	-0.09	-0.21	0.03	-0.01
-	Woody_species	Insect	0.94	0.04	0.02	0.01	0.03
-	Woody_species	Self	-0.02	0.08	0.14	0.03	0.06
-	Woody_species	Wind	0.63	-0.15	0.2	0.04	0.09
Specialized	All_species	Insect	0.94	0.03	-0.1	0.07	-0.04
Specialized	All_species	Self	0.12	-0.03	-0.08	-0.04	-0.04
Specialized	All_species	Wind	1.63	0	-0.01	0	-0.01
Specialized	Grasses	Wind	1.29	0	-0.11	0	-0.05
Specialized	Herbs	Insect	0.92	-0.03	-0.08	0.08	-0.07
Specialized	Herbs	Self	0.16	0	-0.02	-0.03	-0.01
Specialized	Herbs	Wind	0.23	0	-0.04	-0.02	0.01
Specialized	Woody_species	Insect	0.59	0.02	-0.08	0.04	-0.02
Specialized	Woody_species	Wind	0.82	-0.06	0.17	0.03	0.05

Appendix III. Canopy densities of four vegetation strata in each habitat type.

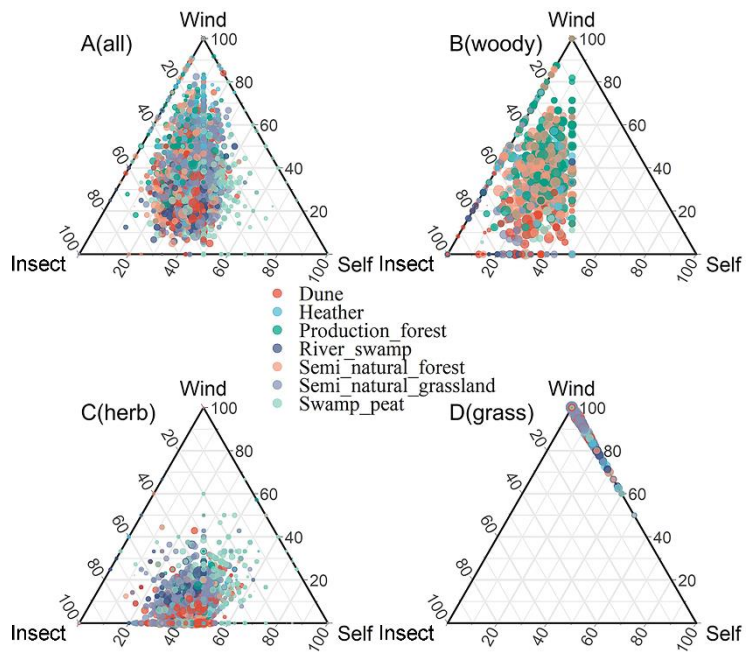
Strata	Habitat types	Min	Max	Mean $\pm$ sd
0.5to2 m	Dune	0	27.3	3.2 $\pm$ 5.1
0.5to2 m	Heather	0	29.8	1.2 $\pm$ 2.4
0.5to2 m	Production_forest	0	19.3	2.4 $\pm$ 2.0
0.5to2 m	River_swamp	0	23.3	3.5 $\pm$ 4.5
0.5to2 m	Semi_natural_forest	0	44.6	3.2 $\pm$ 3.5
0.5to2 m	Semi_natural_grassland	0	56.8	1.1 $\pm$ 2.8
0.5to2 m	Swamp_peat	0	43.9	2.4 $\pm$ 5.0
2to5 m	Dune	0	28.5	1.9 $\pm$ 4.0
2to5 m	Heather	0	39.6	2.3 $\pm$ 3.7
2to5 m	Production_forest	0	24.5	5.3 $\pm$ 3.8
2to5 m	River_swamp	0	33.2	4.7 $\pm$ 6.5
2to5 m	Semi_natural_forest	0	46.5	7.1 $\pm$ 5.6
2to5 m	Semi_natural_grassland	0	34.3	1.3 $\pm$ 3.2
2to5 m	Swamp_peat	0	42.4	1.1 $\pm$ 3.2
5to10 m	Dune	0	40.0	0.7 $\pm$ 2.8
5to10 m	Heather	0	32.7	2.8 $\pm$ 4.9
5to10 m	Production_forest	0	54.2	11.2 $\pm$ 7.8
5to10 m	River_swamp	0	34.0	4.0 $\pm$ 6.8
5to10 m	Semi_natural_forest	0	52.6	12.5 $\pm$ 8.3
5to10 m	Semi_natural_grassland	0	33.1	1.2 $\pm$ 3.4

5to10 m	Swamp_peat	0	18.3	0.4 ± 1.7
<hr/>				
10to20 m	Dune	0	24.8	0.2 ± 1.5
10to20 m	Heather	0	47.5	1.5 ± 4.8
10to20 m	Production_forest	0	68.1	31.2 ± 13.0
10to20 m	River_swamp	0	35.0	3.3 ± 6.6
10to20 m	Semi_natural_forest	0	70.3	28.1 ± 15.0
10to20 m	Semi_natural_grassland	0	65.3	1.3 ± 5.6
10to20 m	Swamp_peat	0	23.4	0.1 ± 1.0
<hr/>				

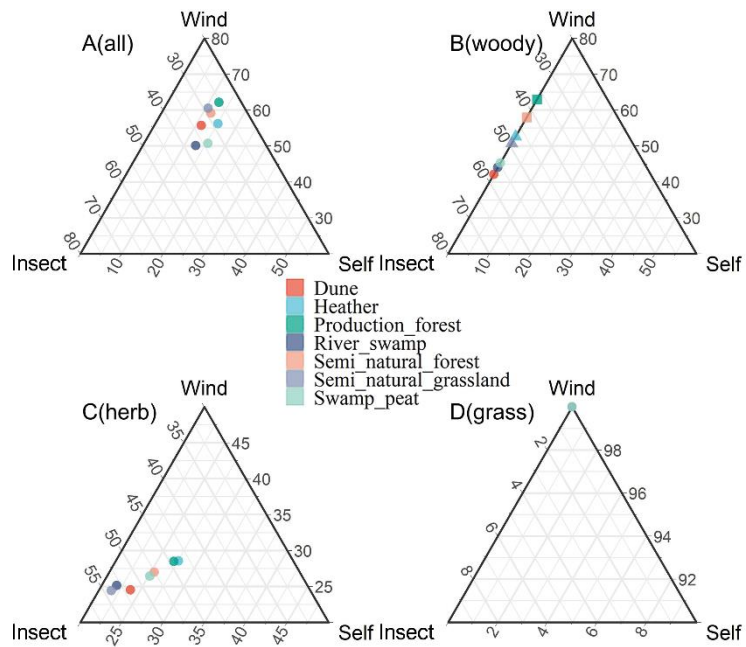


Appendix IV. Percentages of species with different pollination modes in each of seven habitat types. (A) the percentages of insect, wind and self pollinated species in all grid cells. (B) the density of plots with different percentages of insect, wind and self pollinated species in all grid cells.

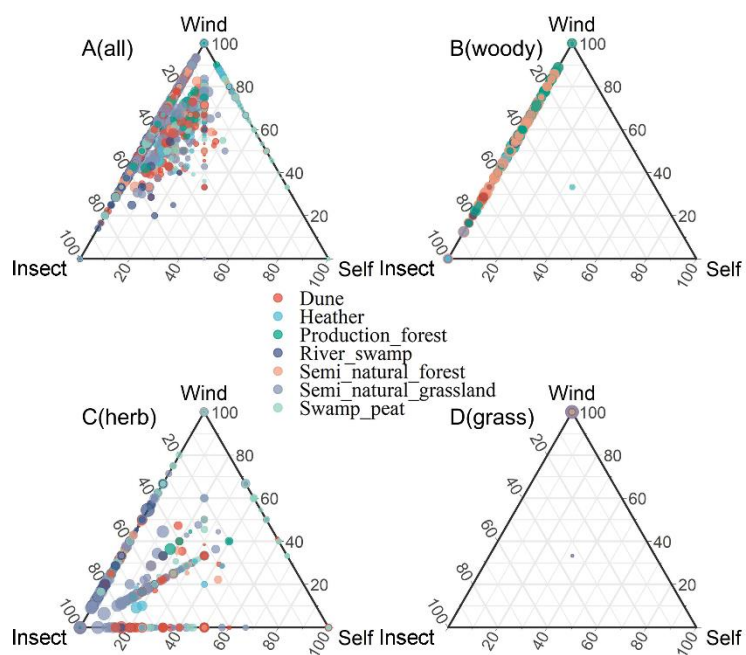




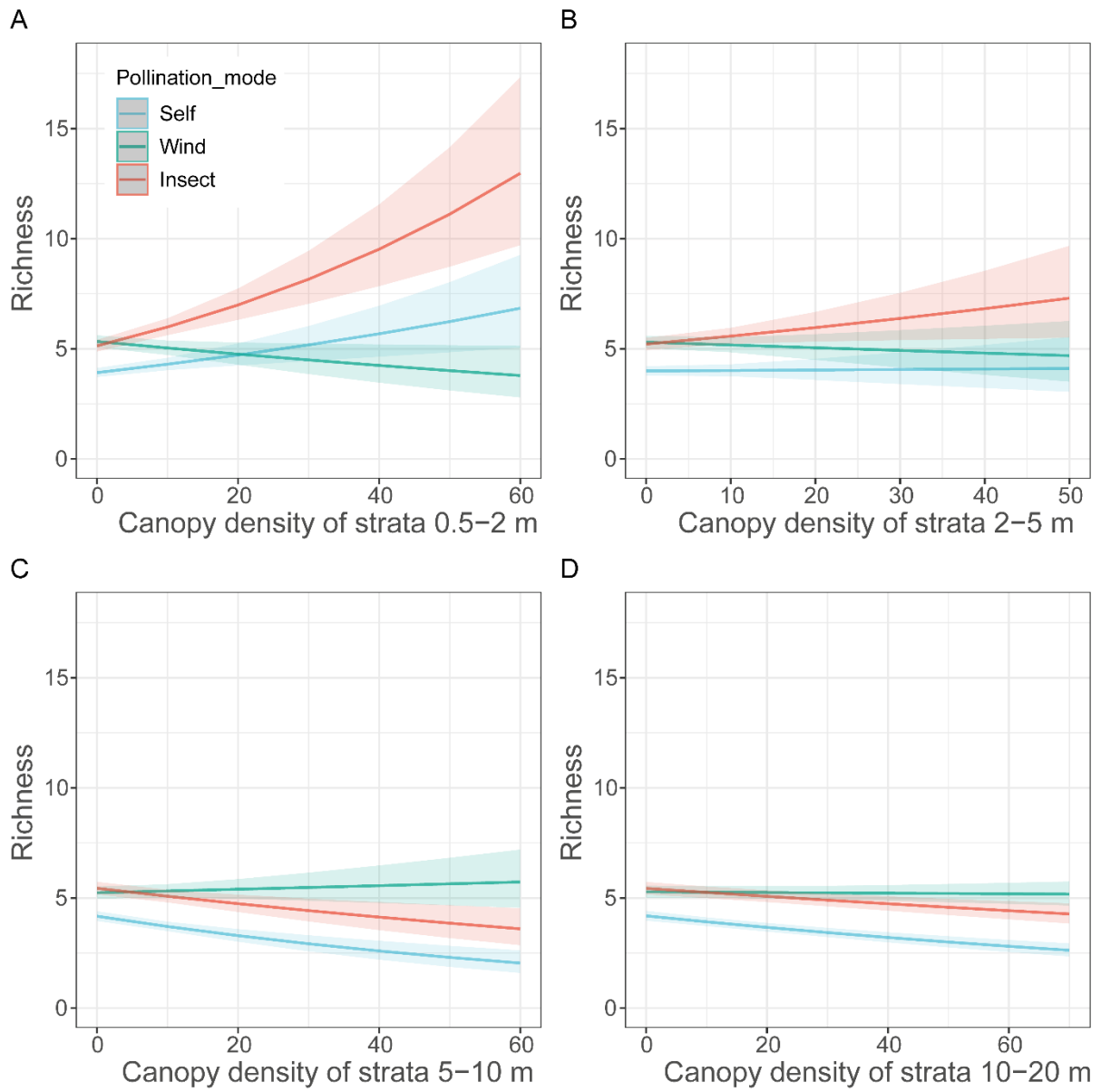
Appendix V. Percentages of species with different pollination modes in all grid cells for (A) all plants, (B) woody species, (C) herbs and (D) grasses. In this ternary graph, each color indicates one habitat type.



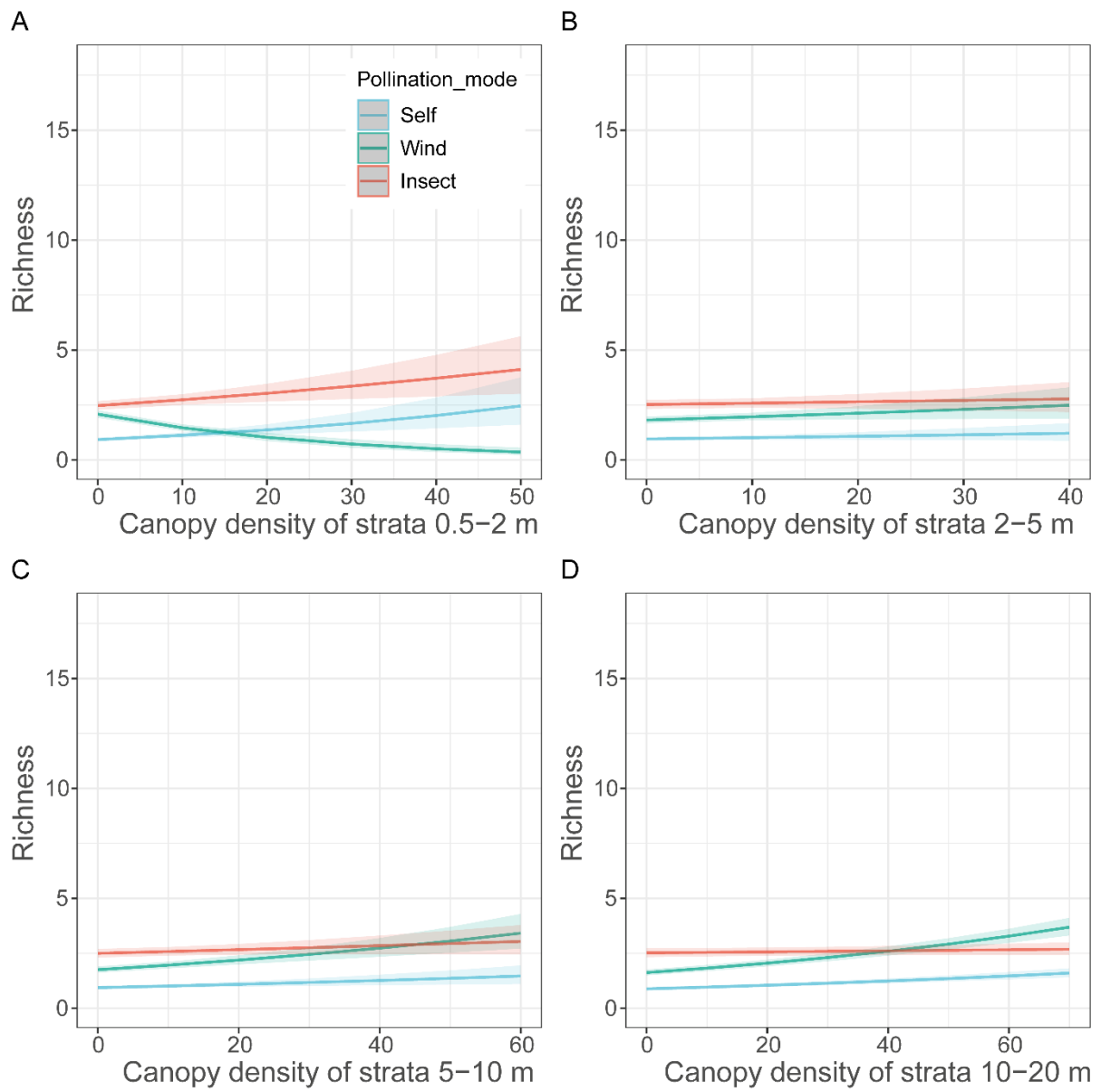
Appendix VI. Percentages of species with different specialized pollination modes in each of seven habitat types for (A) all plants, (B) woody species, (C) herbs and (D) grasses. In this ternary graph, different colors indicate different habitat types and different shapes mean statistically different clusters (cluster analysis by *compositions*).



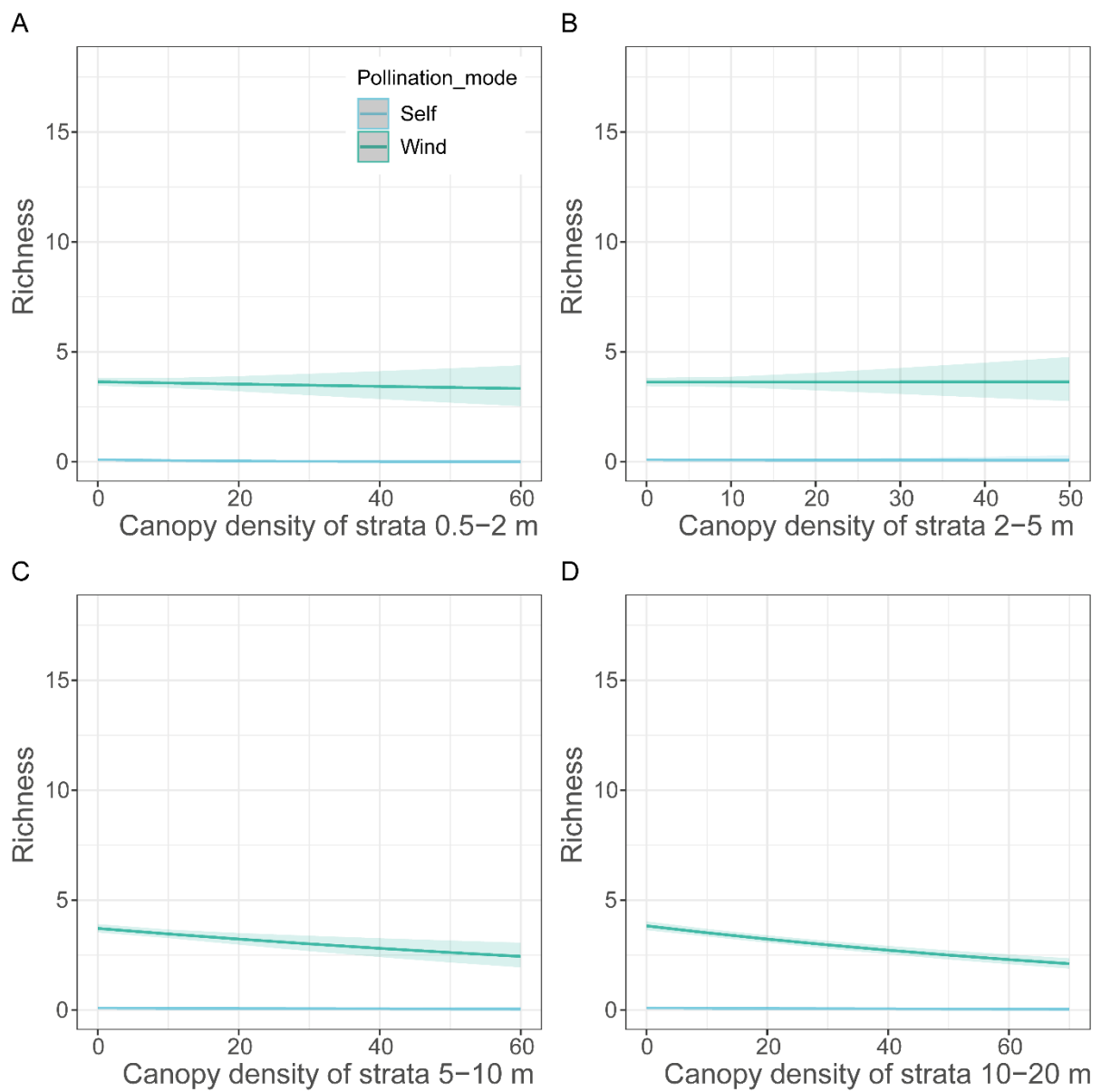
Appendix VII. Percentages of species with different specialized pollination modes in all grid cells for (A) all plants, (B) woody species, (C) herbs and (D) grasses. In this ternary graph, each color indicates one habitat type.



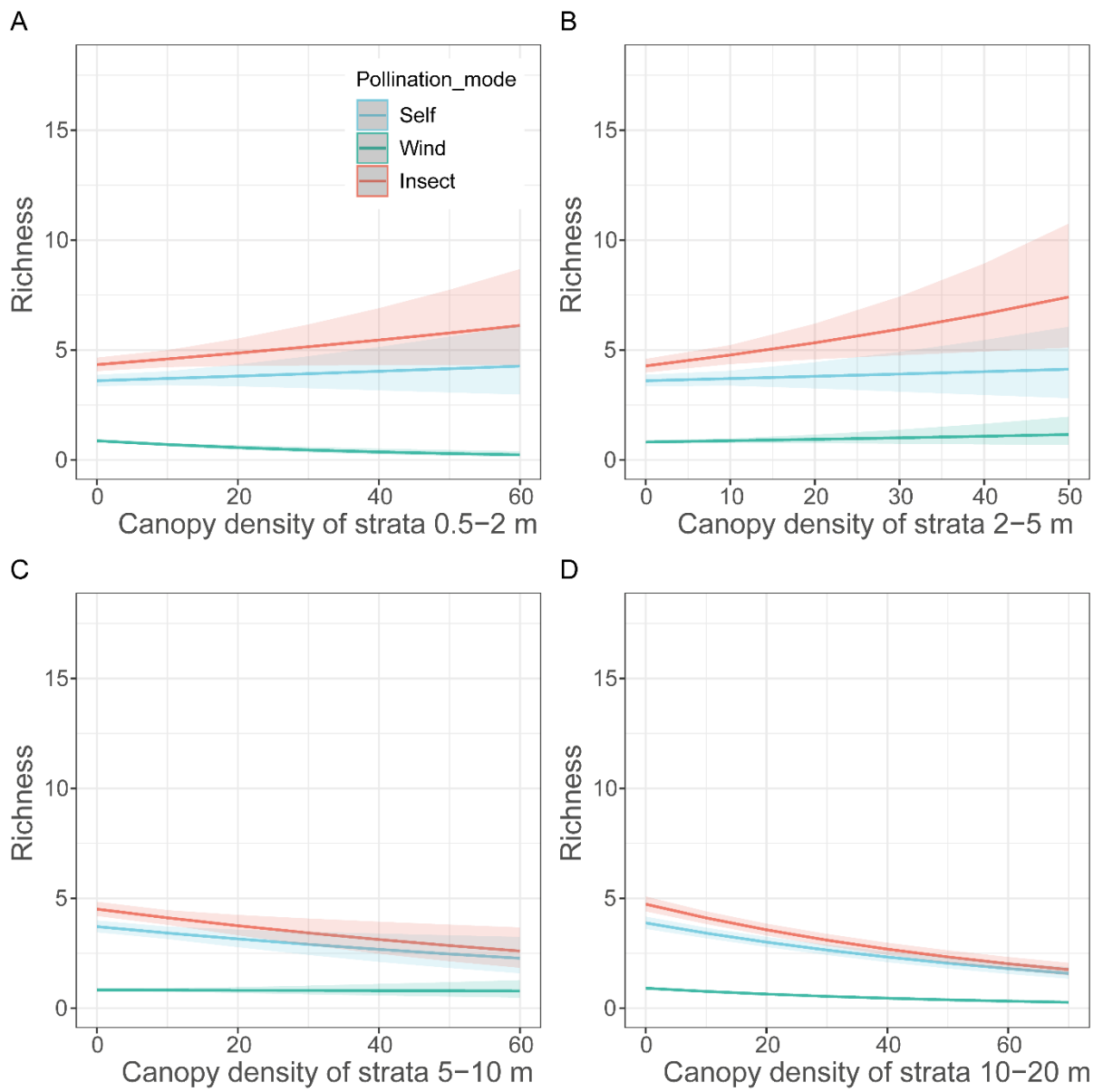
Appendix VIII. Responses of richness of all plants with different pollination modes to vegetation structure



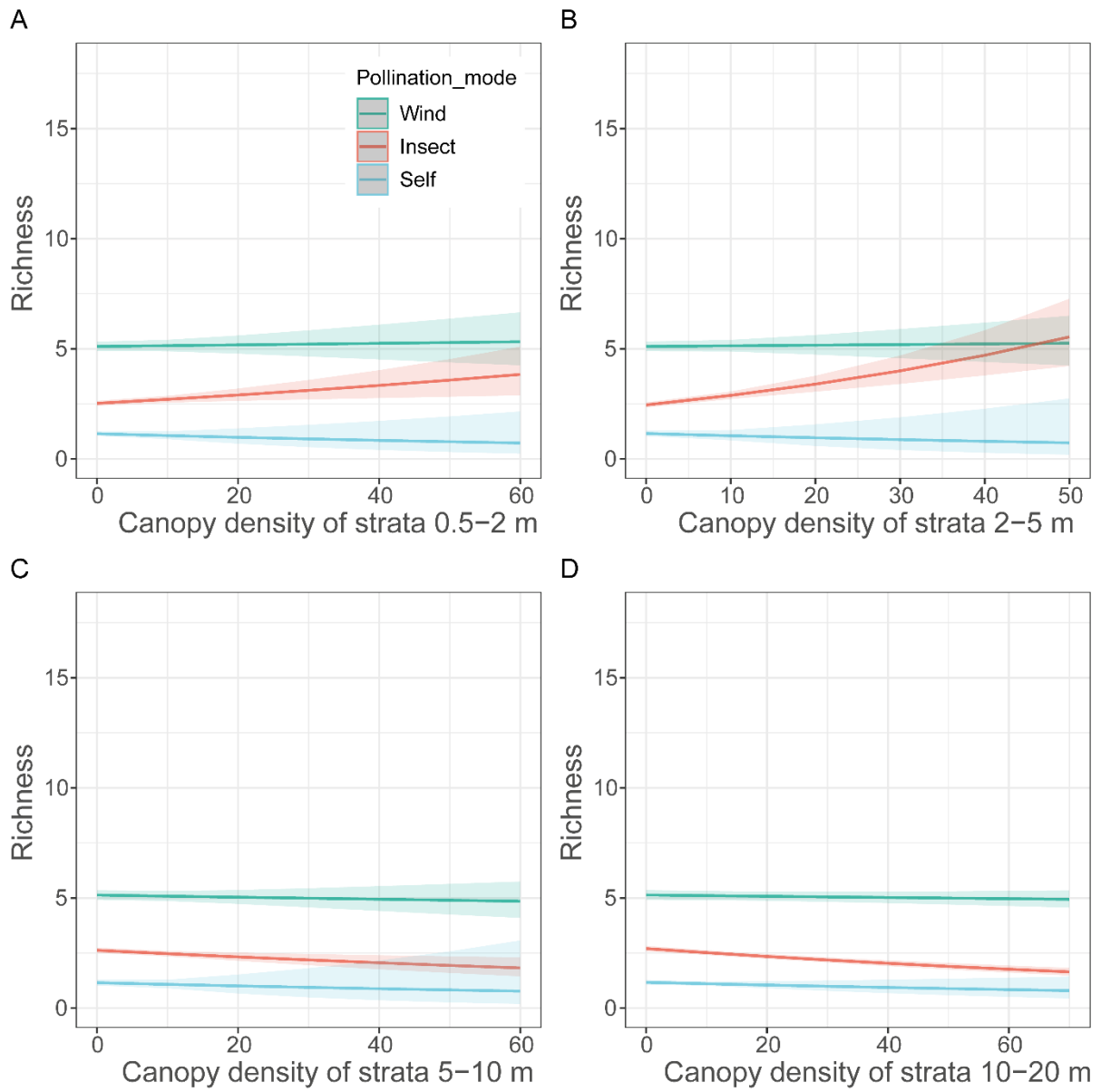
Appendix IX. Responses of richness of woody plants with different pollination modes to vegetation structure.



Appendix X. Responses of richness of grasses with different pollination modes to vegetation structure.

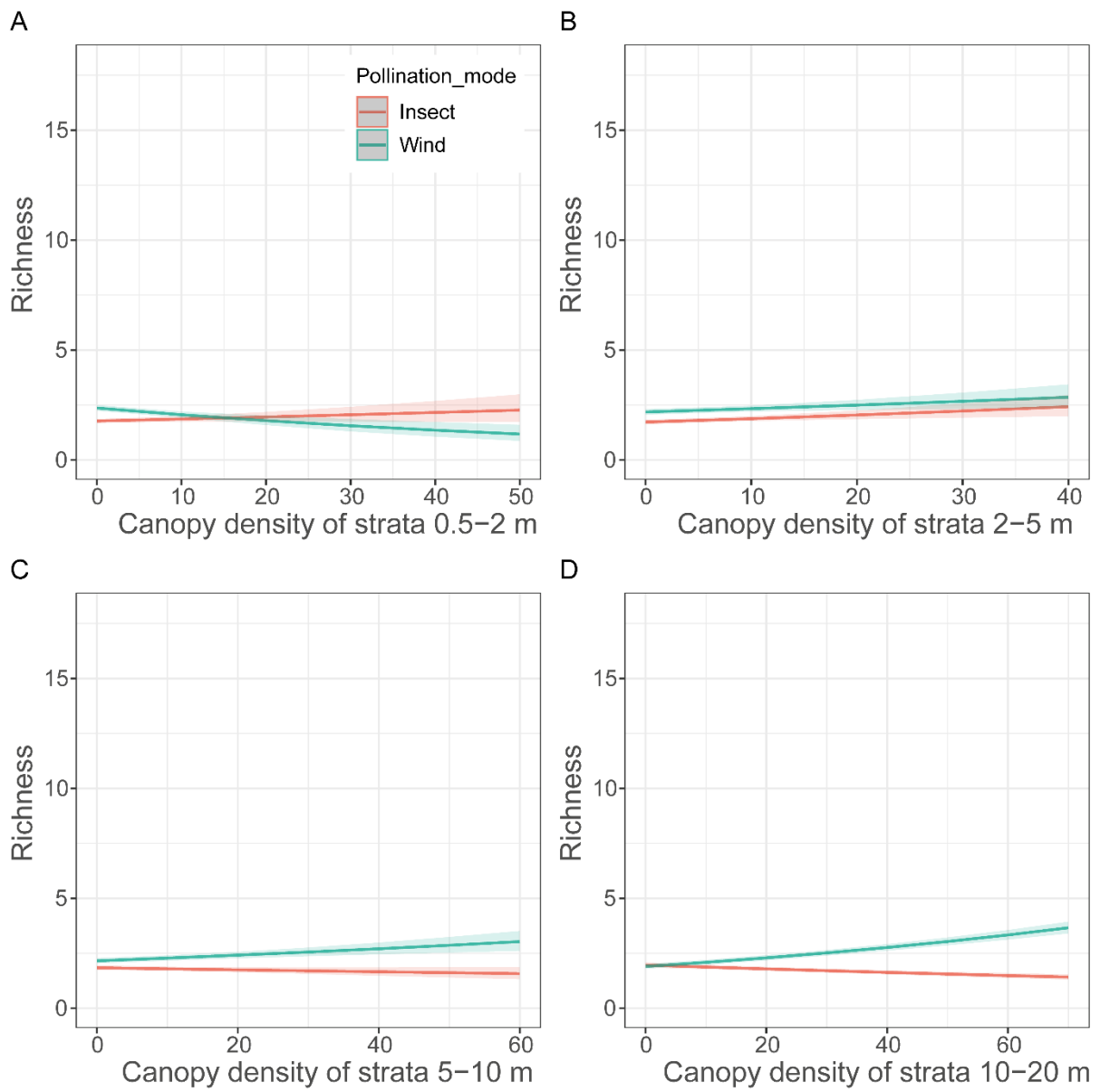


Appendix XI. Responses of richness of herbs with different pollination modes to vegetation structure.

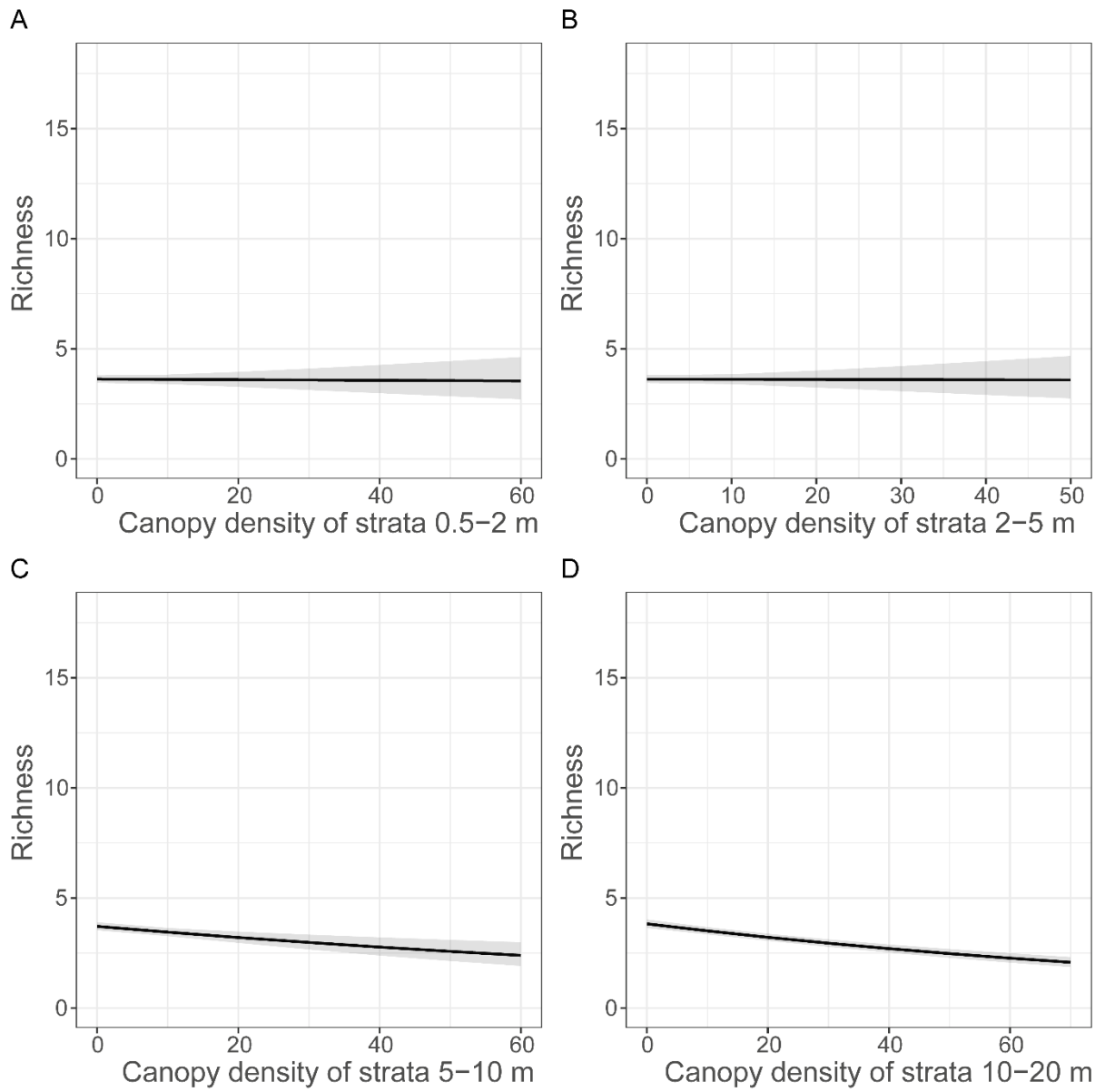


Appendix XII. Responses of richness of all plants with different specialized pollination modes to vegetation structure.

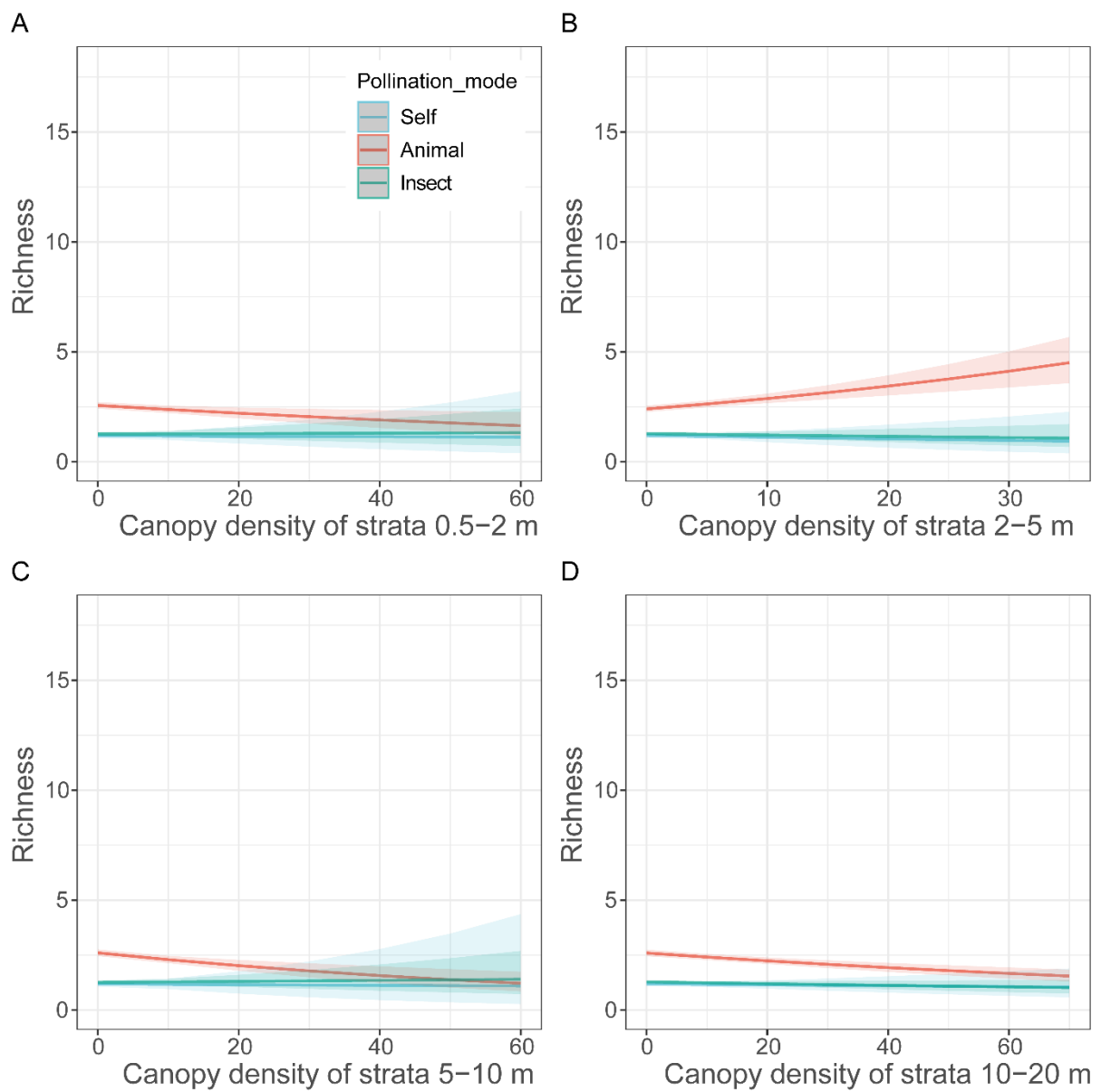




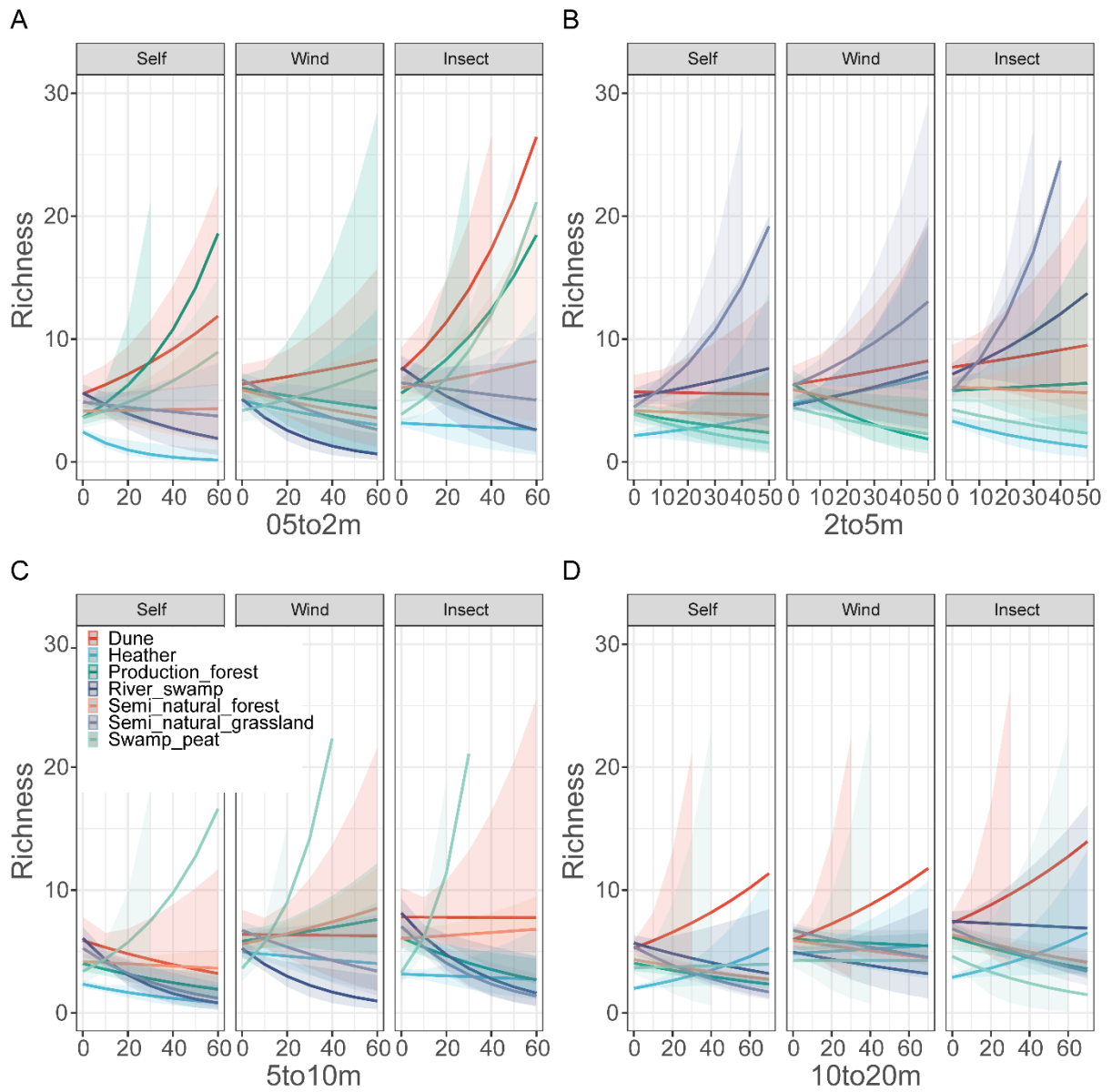
Appendix XIII. Responses of richness of woody plants with different specialized pollination modes to vegetation structure.



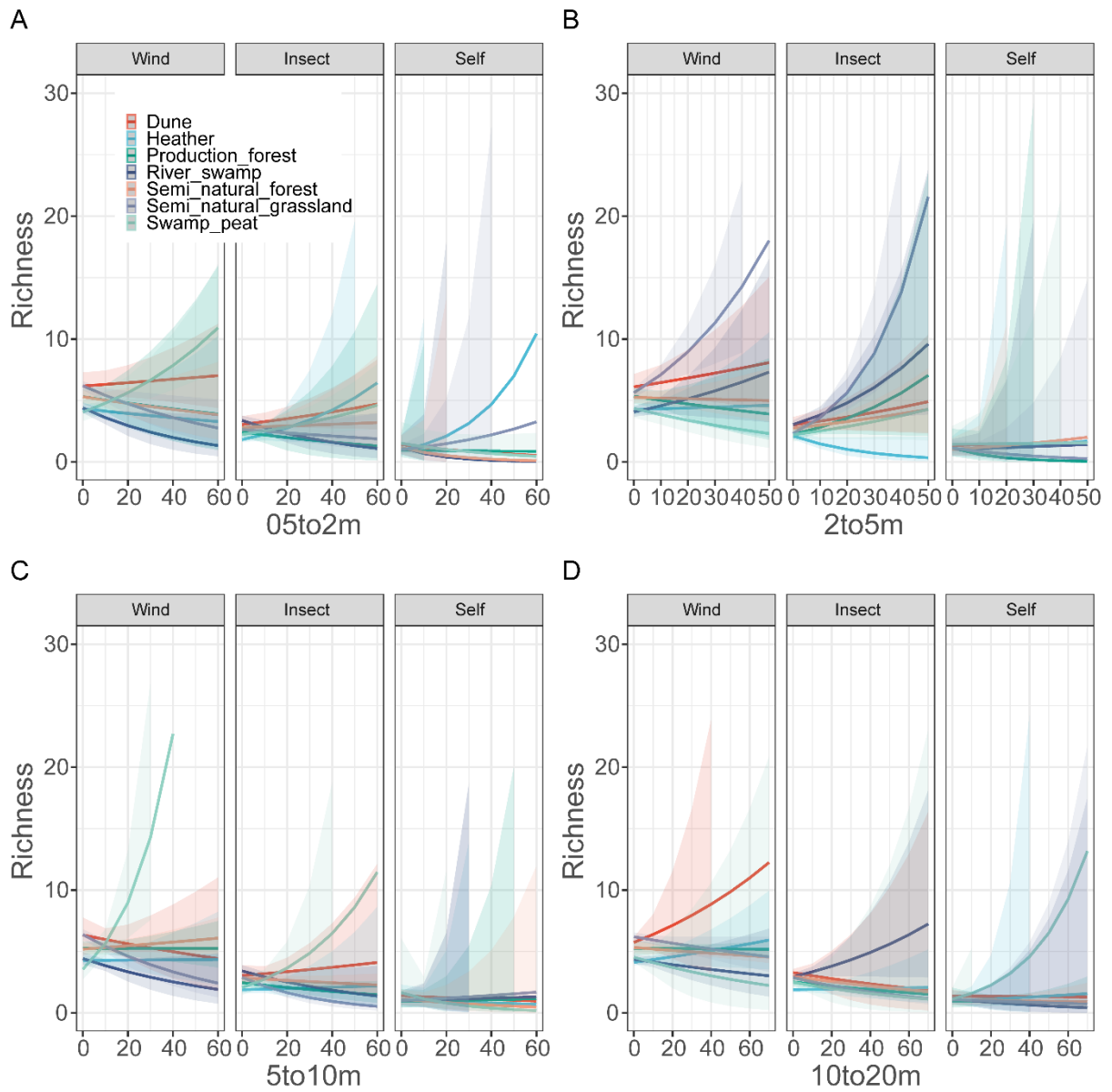
Appendix XIV. Responses of richness of grasses with different specialized pollination modes to vegetation structure.



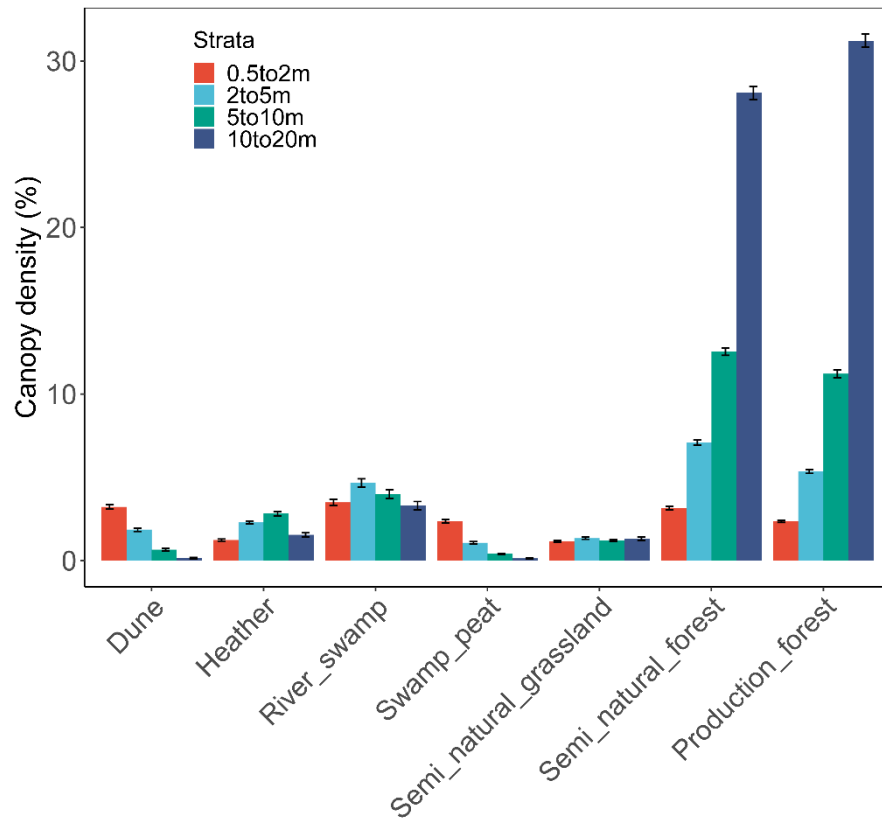
Appendix XV. Responses of richness of herbs with different specialized pollination modes to vegetation structure.



Appendix XVI. Responses of richness of plants with different pollination modes to each variable in the full mode. (A) for a canopy density of 0.5-2 m vegetation stratum. (B) for a canopy density of 2-5 m vegetation stratum. (C) for a canopy density of 5-10 m vegetation stratum. (D) for a canopy density of 10-20 m vegetation stratum.



Appendix XVII. Responses of richness of plants with different specialized pollination modes to each variable in the full mode. (A) for a canopy density of 0.5-2 m vegetation stratum. (B) for a canopy density of 2-5 m vegetation stratum. (C) for a canopy density of 5-10 m vegetation stratum. (D) for a canopy density of 10-20 m vegetation stratum.



Appendix XVIII. Average canopy densities of four vegetation strata in each habitat type.